



Ready for Today.

weca | Wisconsin Early
Childhood Association
Because small lives get bigger

2012 Annual Report



Ruth Schmidt
Executive Director

Today, there are over 350,000 children in Wisconsin under the age of five.

Today, these children cannot wait. For teachers that support the explosive growth of their young brains; for healthy food that helps build strong motor skills; for books, blocks, puzzles, and play that stimulate just the right development; for lessons in caring and sharing that lead to socially and emotionally sound lives.

These children cannot wait.

For tomorrow will arrive all too soon, bringing with it the consequences of our inaction. Tomorrow we pay the costs of remedial education when quality early education today can ensure children are prepared to learn when they begin kindergarten.

Tomorrow holds the threat of climbing delinquency costs when quality early education today can ensure a strong social-emotional foundation for all children. Tomorrow we pay the price of youth dropping out of school when quality early education today holds the promise of more and more children graduating from high school. Tomorrow we absorb the escalating cost of government assistance programs when quality early education today is a proven indicator of future wage earnings.

Tomorrow is too late.

And so WECA stands ready, today.

Ready with scholarships for child care teachers going back to school to become more prepared

to meet the needs of our children, ready with stipends to say "thank you" to dedicated teachers working for very low wages, ready with Micro-Grants to help pay for materials and training to improve child care programs, ready with visits to the Capitol to advocate for strong public policy supporting children and families, ready with professional staff to consult on best practices, ready with publications and research to advance the early childhood field.

We invite you to stand with us, today. Become a supporter, become a member, become an advocate. As Mr. Rogers once said, "Anyone who does anything to help a child in his life is a hero to me." I couldn't agree more.

Be a hero. Today.

**"Many things we need can wait.
The child cannot. Now is the time his
bones are formed, his mind developed.
To him we cannot say tomorrow, his
name is**
today."

-Gabriela Mistral, poet and educator



6:47 am

Wisconsin, U.S.A.

Ready to give children a good start in life.

Today, on their way to work, thousands of parents across Wisconsin entrust the most important thing in their lives—their young children—to a child care provider.

They can be confident that their sons and daughters are learning,

growing, and playing with guidance from skilled, nurturing adults. And the companies and organizations that parents work for have a focused, productive workforce as a result.

Early childhood educators in every corner of the state make this possible every working day. They're ready to help children get a good start—today, and every day.

In Wisconsin, about 70 percent of children—infants to age five—receive child care of some sort.





8:06 am

La Crosse, WI

Creating healthy bodies and active minds.

Today, children in La Crosse are getting a healthy breakfast at a family child care program. The eating habits children develop when they're young remain with them for the rest of their lives.

Family child care providers from nearly every county

in Wisconsin participate in the WECA Food Program which reimburses providers who serve healthy meals.

In 2012, 13,511 children were served healthy meals and snacks that were subsidized in part by the WECA Food Program.

When children get the nutrition they need, they can learn, play, and be their very best.

Who benefits from the WECA Food Program?



Children who get the nutrition they need.



Providers who receive financial support.



Parents who know their children are well nourished.

10:21 am

Milwaukee, WI



Achieving quality care and education together.

For teachers at a child care center in Milwaukee, quality is more than simply caring. This morning, their WECA YoungStar technical consultant met with them to discuss ways to improve lesson plans and integrate physical activity into the day.

From the center director to the assistant teachers, the program is dedicated to high-quality child care.

YoungStar is Wisconsin's child care quality rating and improvement program. Through YoungStar, WECA provides professional development counseling, training, program ratings, and Micro-Grants across Wisconsin. WECA also provides one-on-one technical consulting with programs in Milwaukee County.

Improving child care in Wisconsin through the YoungStar program:



As of October 2012, WECA technical consultants made over 4,200 visits to programs in the Milwaukee-area.



Through Micro-Grants, WECA helped 1,918 child care programs get educational resources they need to provide higher quality care.

12 Noon

Green Bay, WI



Supporting children and those who care for them.

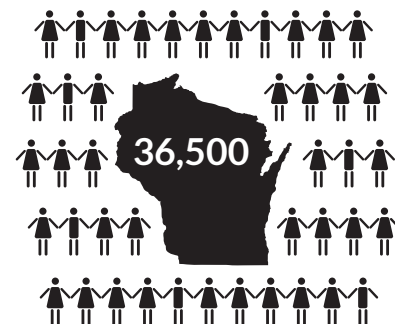
Lunch is over and children in Green Bay are listening to a story before their afternoon nap.

While the lead teacher is reading, the assistant teacher prepares afternoon activities to promote

language development and social skills. But first, she took a phone call from a mom concerned about her daughter's cough. The teacher has been checking on the young girl all morning and assures the mother that her daughter is feeling much better. Mom goes back to work relieved.

Every day in Wisconsin, thousands of early childhood teachers work to make sure children and families have the support they need.

WECA works to support Wisconsin's estimated 36,500 early educators.





Rewarding educated and dedicated teachers.

Naptime is over. The children at an early education center in Clinton now have enough energy to run 10 miles, or so it seems. But their early childhood teacher adeptly directs their energy, implementing practices she learned at a WECA training over the weekend. She paid for

the training with her REWARD Wisconsin stipend.

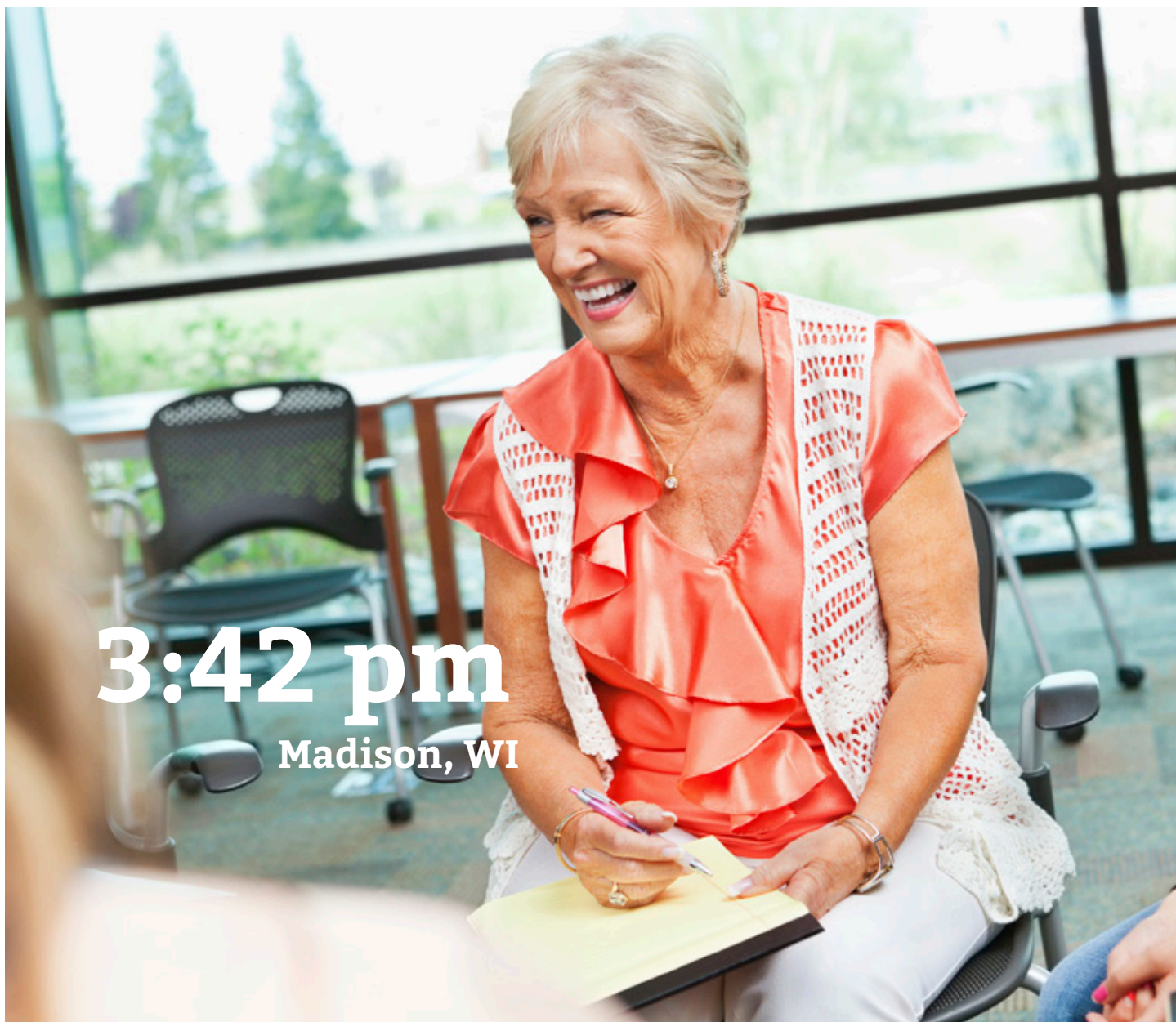
REWARD Wisconsin promotes teacher commitment and longevity by providing salary stipends to early educators.

In 2012, almost \$750,000 in stipends were awarded.

Stipends cushion the low wages of child care providers (about \$23,000 per year) and help keep the best teachers working with children.

Annually, more than 99% of REWARD Wisconsin recipients remain in their jobs compared to less than 80% for the early education workforce as a whole.





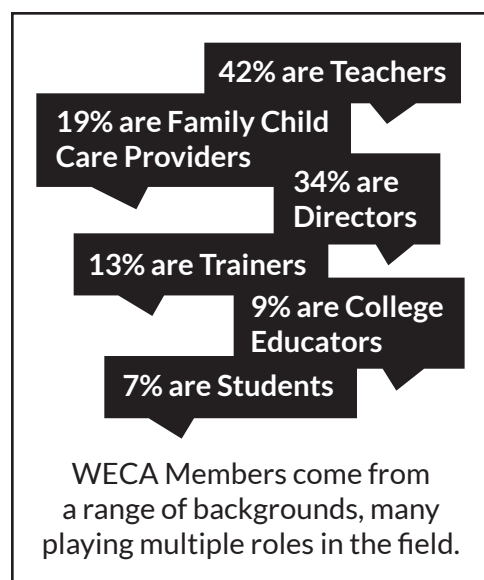
Building a community of opportunity.

This afternoon, a family child care provider renewed her WECA membership. She's been a member for over 10 years and has taken part in WECA's advocacy campaigns, making sure the early education workforce gets the necessary funding to support progress within the field. She also has

built a professional network through her WECA local affiliate.

WECA is Wisconsin's leading early childhood education professional member association, with 15 local affiliates across Wisconsin and a national affiliation with the National Association for the Education of Young Children.

In 2012, over 2,500 members received benefits including discounts on classroom resources and access to professional development opportunities.





6:27 pm

Appleton, WI

Developing businesses that shape the future.

As the last child leaves, the child care center director is getting ready to attend a business practices training. Like thousands of small business owners across Wisconsin, she must apply sound financial and management practices for her business to thrive.

Beyond business practices trainings, in 2012 WECA provided 139 trainings on a range of topics including early literacy, child development, special needs, family relationships, and more.

In 2012, WECA facilitated 100 workshops at the Annual Conference in Waukesha and the Pathways to Quality Conference in Milwaukee.

This year, through conferences and trainings, WECA helped nearly 2,000 early education professionals get the skills they need to grow in their careers.

Nearly 500 attendees from across the state met in Waukesha for the 2012 WECA Annual Conference.



9:43 pm
Wisconsin Rapids, WI



Growing an educated workforce.

It's getting late, but a teacher in Wisconsin Rapids is also a student.

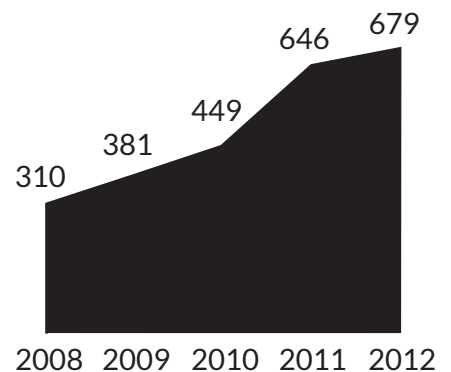
As part of the T.E.A.C.H. Early Childhood® Wisconsin scholarship program, she's on track to receive her degree in Early Childhood Education this spring.

Through T.E.A.C.H. Early Childhood® Wisconsin, WECA provides credit-based, higher-education scholarships to early childhood teachers who work in regulated settings.

In 2012, WECA awarded 1,148 scholarships, totaling nearly \$3 million.

T.E.A.C.H. recipients had an average GPA of 3.59 and completed 4,448 courses at technical and four-year colleges.

T.E.A.C.H. Early Childhood® Wisconsin 5-Year Growth in 1st-time Scholarship Recipients



Today...

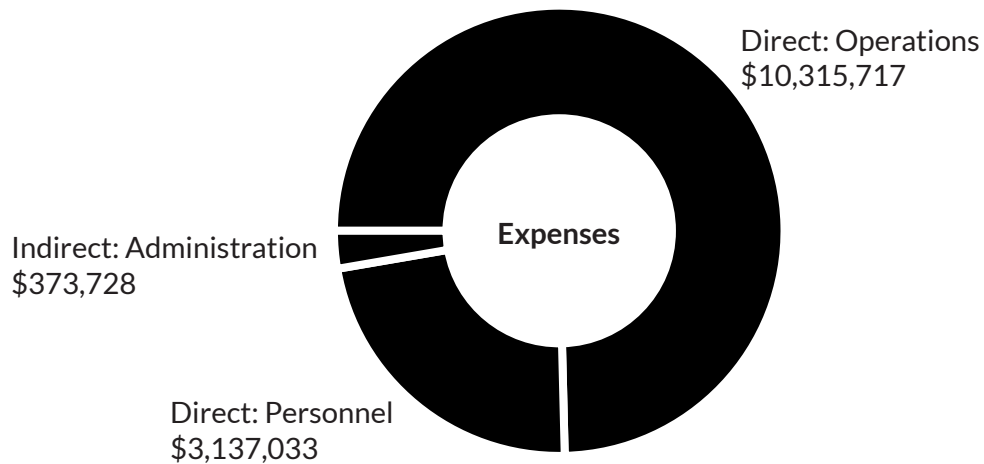
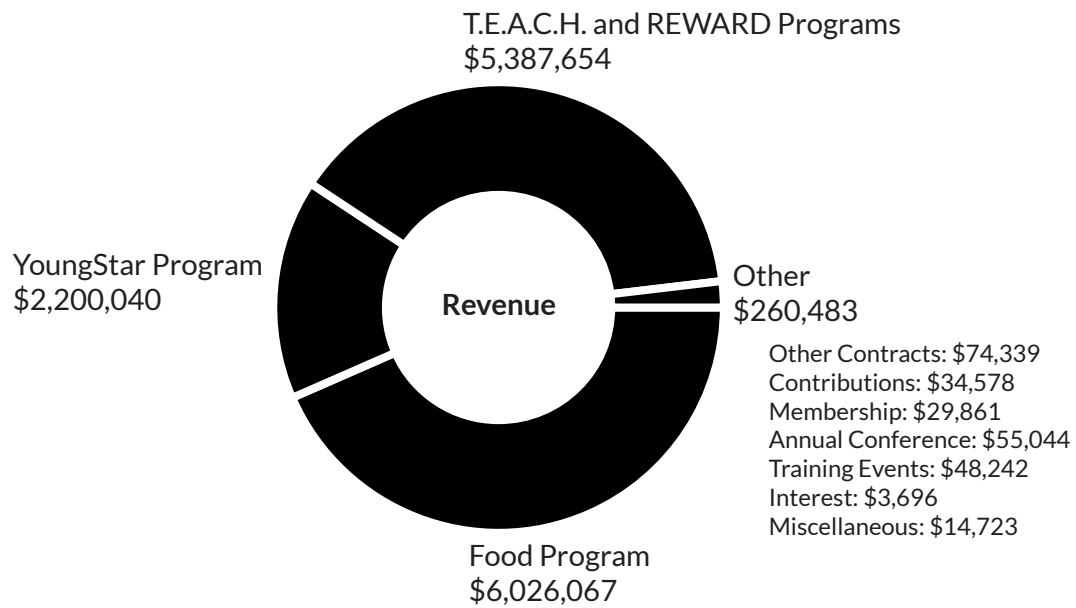
**is so important
in the lives of Wisconsin's
young children.**

When children get what they need, they undergo extraordinary development, especially in their first five years of life.

WECA impacts the professionals who work with Wisconsin's youngest children to ensure that children get what they need.

Today, by the numbers.

Remaining dedicated to investing the most resources in program services, WECA kept administrative expenses to only 3.1% of the total budget.



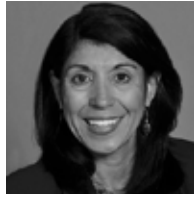
Net Assets
\$198,387

Today's leaders.

Board of Directors



Sue Schimke, President
Angel Academy
Beloit, WI



Wilma Bonaparte, Ph.D.
Milwaukee Area Technical College
Milwaukee, WI



Dipesh Navsaria, M.D.
University of Wisconsin
Hospital and Clinics
Madison, WI



Celeste Swoboda, Vice President
Teddy Bear Totland Child Care
Chippewa Falls, WI



Robin Fox, Ph.D.
University of Wisconsin-Whitewater
Whitewater, WI



Jamie Tramte-Brassfield
Northeast Wisconsin Early
Childhood Organization
Green Bay, WI



Luke Chirhart, Secretary
Lakeshore Learning Materials
Libertyville, IL



Wanda Montgomery
Children's Hospital of Wisconsin
Milwaukee, WI



Henry Wilde
Acelero Learning
Madison, WI

Affiliate Leadership Group and Member Advisory Council

Michelle Brown
Kimberly, WI

Sharon Mras
Stevens Point, WI

Annette Schladweiler
Baldwin, WI

Cindy Devereaux
La Crosse, WI

Cheryl Peters
Milwaukee, WI

Michelle Sorce
Milwaukee, WI

Robin Fox
Whitewater, WI

Catherine Roach
Milwaukee, WI

Carol Spoehr
Madison, WI

Bobbi Hibbard
Chippewa Falls, WI

Patti Robinson
Kenosha, WI

Elizabeth Strasma
Middleton, WI

Rachael Loucks
Stetsonville, WI

Sherri Root
Waupun, WI

Celeste Swoboda
Chippewa Falls, WI

Robin Mainhardt
Rhineland, WI

Amber Schimke
Clinton, WI

Jamie Tramte-Brassfield
Green Bay, WI

Michelle Moland
Green Bay, WI

Sue Schimke
Beloit, WI

Today's supporters.

WECA thanks everyone who contributed in 2012 to help give children a strong start in life.

Individuals

Melanie Arch
 Mary C. Babula
 Miriam Babula
 William E. Bach
 Danessa Bishop
 Cynthia Blanchet
 Gabrielle Blood
 Charles A. Bollig
 Rebecca L. Breda
 Rena D. Broadnax
 Andrew M. Campbell
 Emily Cardarella
 Kelly Chambers
 Thuha T. Dang
 Jeremiah & Cindy Degollon
 Jessica Deubel
 David Edie
 Janine Edwin
 Mary Erickson Gerbig
 Elizabeth A. Follett
 Erin Gernetzke
 Peggy Haack
 Mike Hablewitz
 Stephanie Hall
 Mary P. Hall
 Heather Halvorson
 Nicole Heiden
 Shirley L. Hersh
 Jennifer Hostettler
 (in honor of Summer Moudry)
 Jane K. Jiumaleh
 Dave & Jean Johnsen
 Sara Johnson
 Bruce A. Johnson
 Shannon Kerns
 Kaye Ketterer
 Scott Kinnamon
 Joan Klinkner
 Debbie Knoebl

Angela Kujak
 Brandy Lee
 Claire Lind
 Julie Logan
 John Martens
 Kelly Matthews
 Brian McNamara
 Pam McQuin
 Mark Menzel
 Rosemary Millen
 Julie Miller
 Wanda Montgomery
 Dipesh Navsaria
 Shawn M. Neumann
 Debra J. Oakland
 Caroline Oldershaw
 Xochitl Ortega
 Laura Ovberg
 Jeanette A. Paulson
 Wayne & Nancy Paulson
 Rick & Darcy Perrin
 Ronni L. Pinto
 Pam Polenz
 Cindy Poole
 Sandy Quam
 John P. Quinn
 David A. Riley
 Collette Ross
 Ingrid Rothe
 Nicole Schabow
 Hildegard Schmidt
 Ruth Schmidt
 Tom Schorr
 Stacie Shields
 Katie Smith
 Jeff Spitzer-Resnick
 Nadine Stankey
 Jason Stephens
 Patricia Stickney
 Ellen Thom

Tiffany Thomson-Joling
 Nancy Thruman
 Michael G. Turnis
 Tammy S. Van Fossen
 Derrick Van Mell
 Jeanne Venzke
 Diane Wilkinson
 Shahla Werner
 Judy Zimmer
 Jon Zuk

Organizations

Applied Tech
 Boardman & Clark LLP
 Bunky's Café
 Choles Floral
 Discount School Supply
 El Dorado Grill
 Food Fight, Inc.
 Full Compass
 Kaplan Early Learning Company
 Lakeshore Learning Materials
 Milwaukee AEYC
 Monty's Blue Plate Diner
 Promega
 The Printing Place
 Raven Software
 Supporting Families Together
 Association
 Trinchero Family Estates
 TrueCourse Financial Partners LLC
 UW Health
 Van Mell & Associates
 Wegner CPAs
 Wisconsin Division for
 Early Childhood
 Wisconsin Department of Health
 Services

Today...

**you can make
a difference in
the lives of
Wisconsin's children.**

Your donation is vital to our mission of supporting the teachers of Wisconsin's youngest learners.

Your gift enables us to provide scholarships and training for child care providers throughout Wisconsin. Your generosity benefits not only the providers but the many thousands of young children they care for and teach.

Donate online today at
wisconsinearlychildhood.org/donate



744 Williamson Street, Suite 200
Madison, WI 53703

1556 North Farwell Avenue
Milwaukee, WI 53202

608-240-9880
800-783-9322

414-278-9322



Find us on Facebook at facebook.com/wisconsinearlychildhood



Follow us on Twitter at @EarlyEdMatters

wisconsinearlychildhood.org